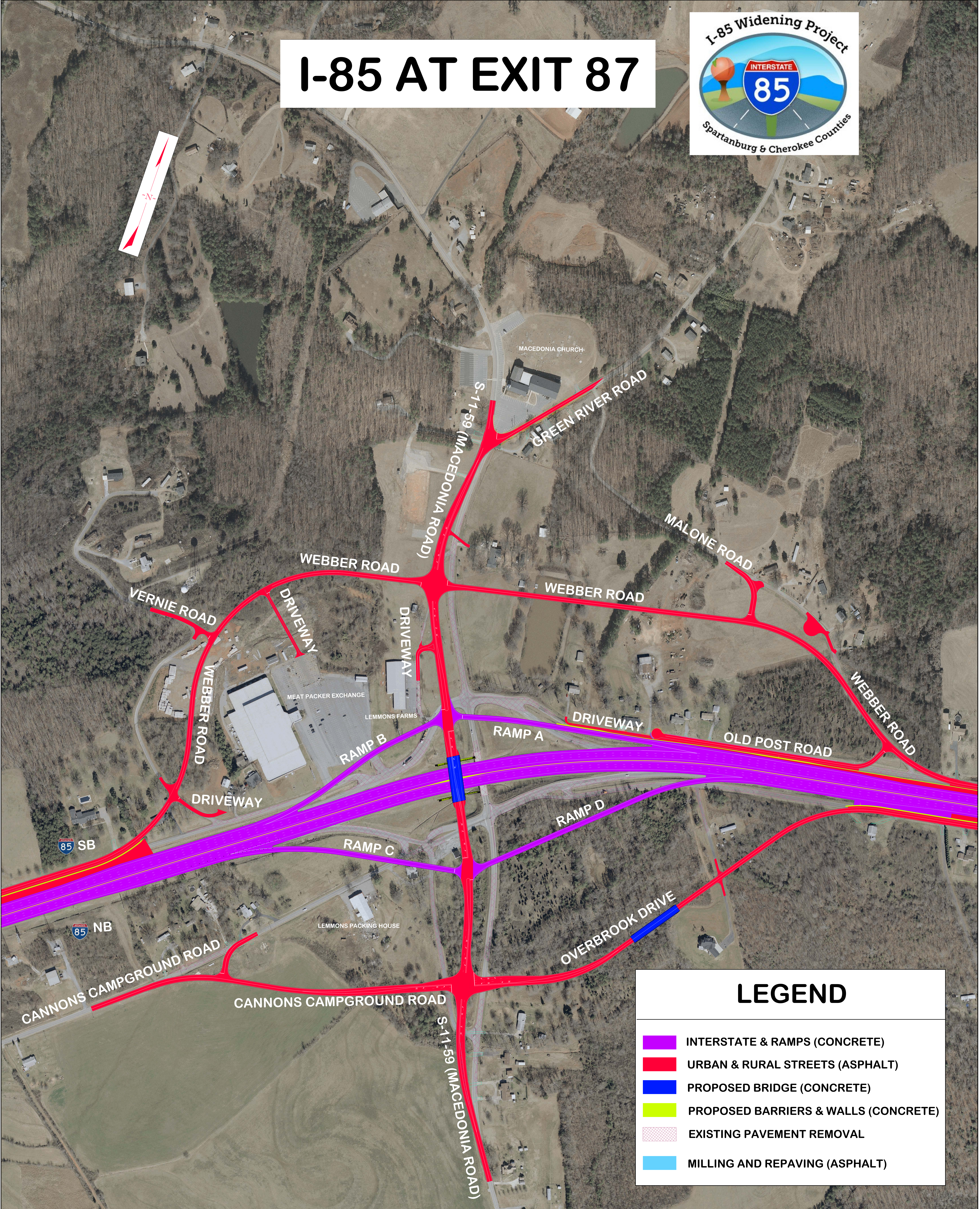
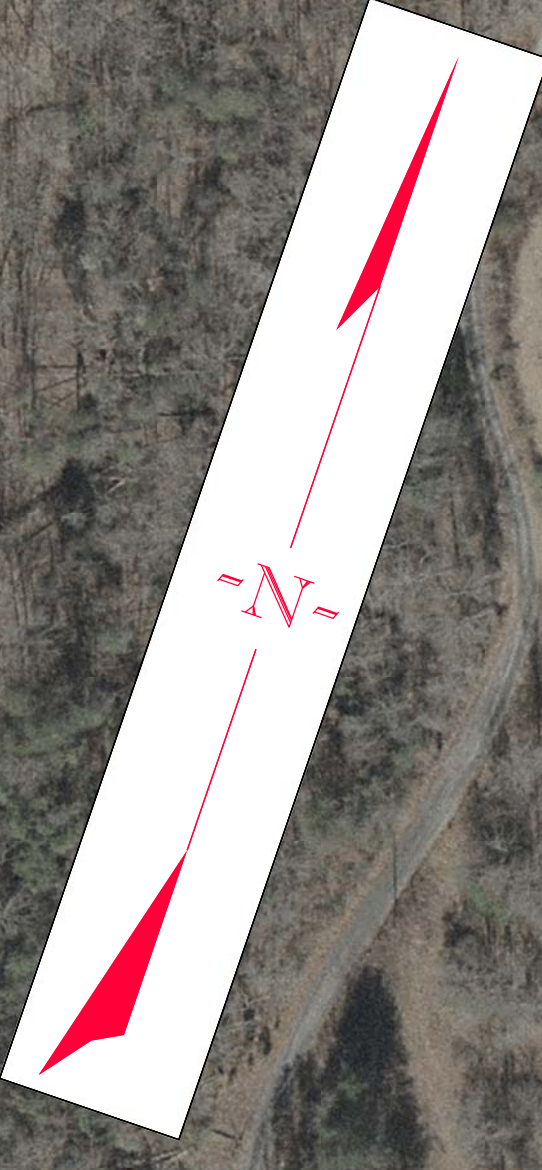


# I-85 AT EXIT 87



### LEGEND

- INTERSTATE & RAMPS (CONCRETE)
- URBAN & RURAL STREETS (ASPHALT)
- PROPOSED BRIDGE (CONCRETE)
- PROPOSED BARRIERS & WALLS (CONCRETE)
- EXISTING PAVEMENT REMOVAL
- MILLING AND REPAVING (ASPHALT)