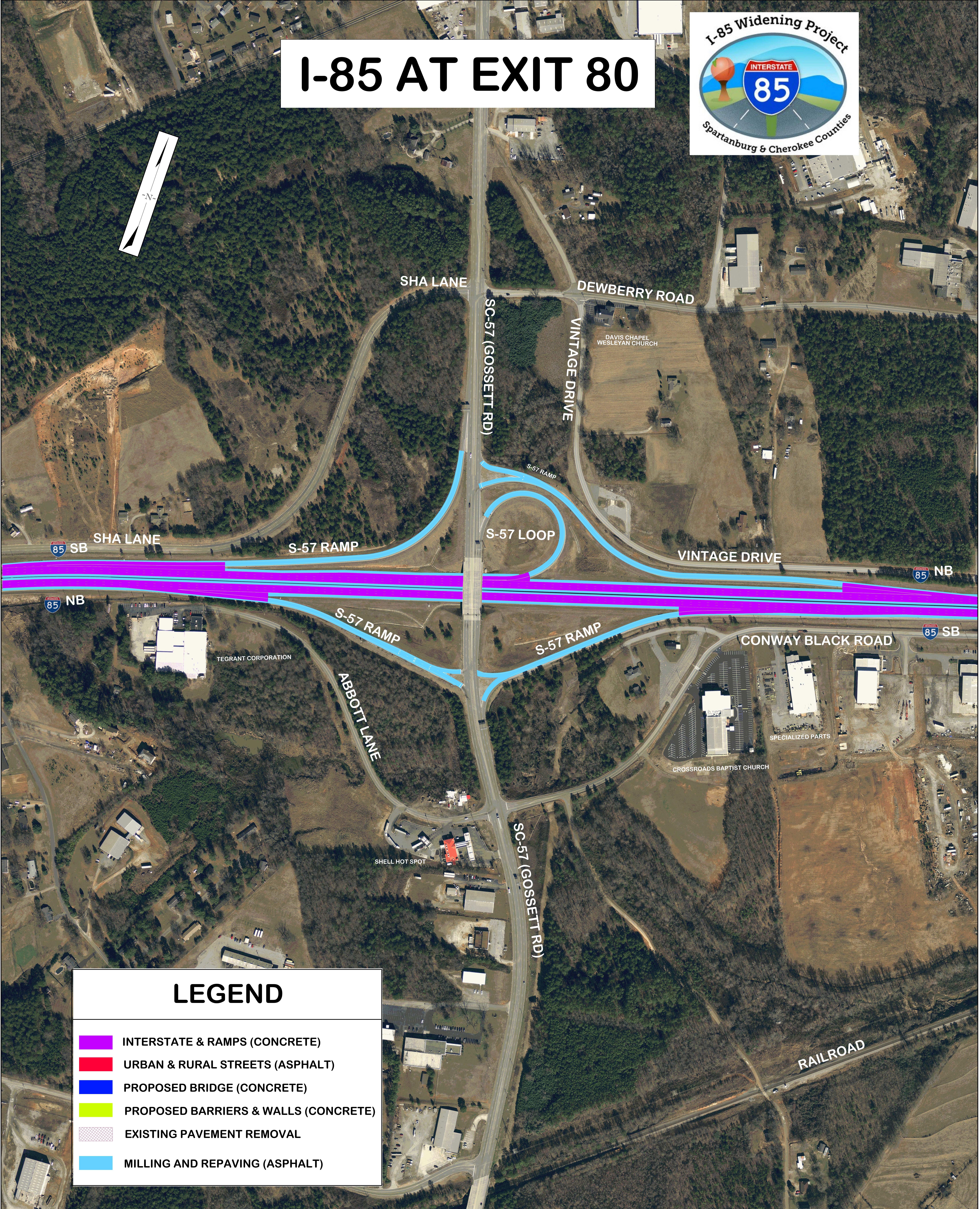
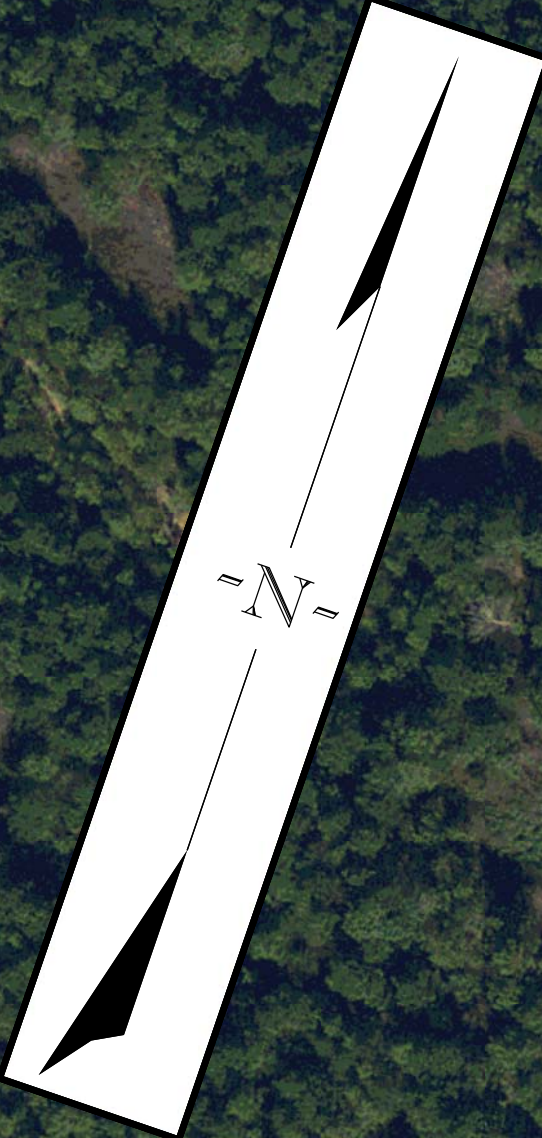


I-85 AT EXIT 80



LEGEND

-  INTERSTATE & RAMPS (CONCRETE)
-  URBAN & RURAL STREETS (ASPHALT)
-  PROPOSED BRIDGE (CONCRETE)
-  PROPOSED BARRIERS & WALLS (CONCRETE)
-  EXISTING PAVEMENT REMOVAL
-  MILLING AND REPAVING (ASPHALT)